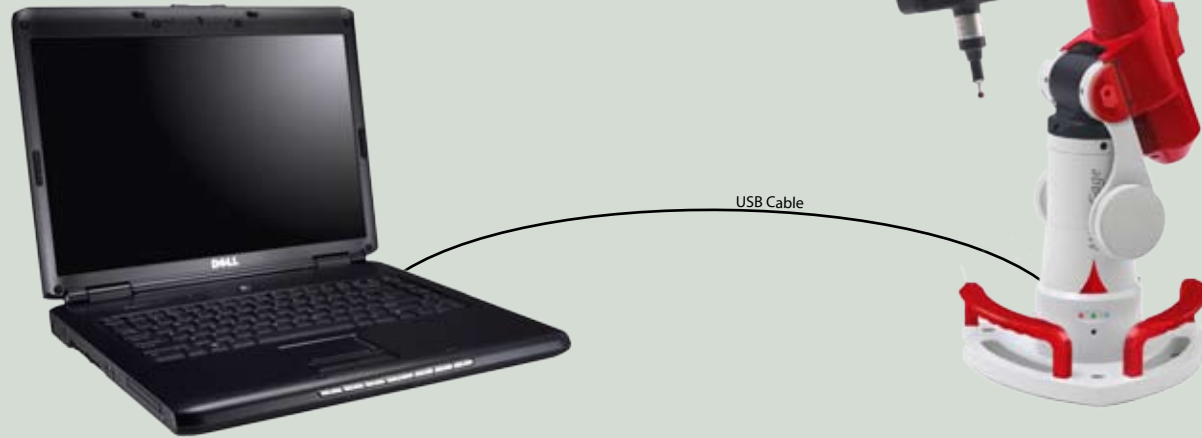


4

Configure Computer

The laptop is preconfigured with all necessary software. Please refer to the online Help provided in the MultiGage software for configuration guidance.



ROMER
HEXAGON METROLOGY

5145 Avenida Encinas, Carlsbad, California 92008

 *MultiGage*

*Quick
Connect
Guide*



ROMER
HEXAGON METROLOGY

1 Unpack the MultiGage Equipment Boxes and inspect the contents.

You should have:

MultiGage Parts List

- a** MultiGage Arm * This document
- b** USB Cable * Desiccant
- c** AC Power Supply & Cord * Probe Qualification Sphere
- d** 2 Contact Probes

Computer Parts List

- e** Preconfigured Laptop Computer
- * Power Supply
- * System / Documentation CD

* = Item not shown

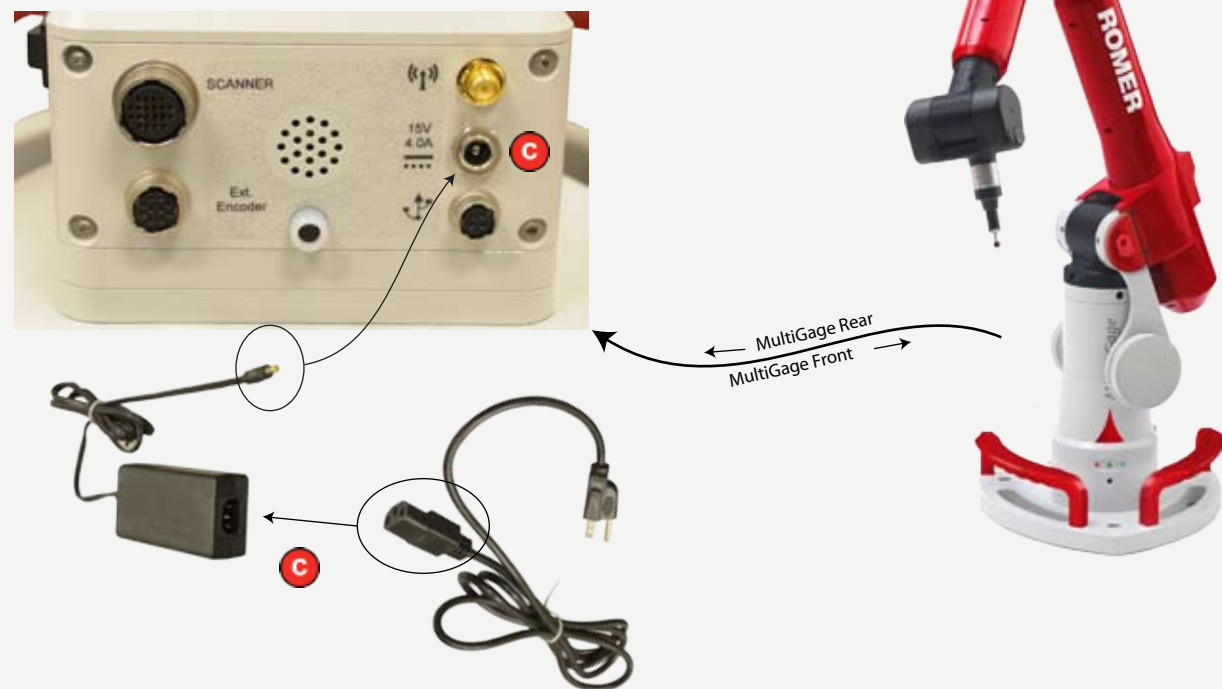


Items Not To Scale

2 Connect the Power Cable (c in Step #1):

Connect one end of the cable to a power source and the other end to the connector below.

Rear Connectors



3 Connect the Computer to the Arm with USB Cable

Connect one end of the USB Cable (b) to the USB Connector (b) on the rear of the Arm and the other end to a USB port on the computer.



Items Not To Scale

Optional Purchase

Connect the Computer to the Arm with *Optional* WiFi

If you purchased the Optional WiFi, the WiFi connection between the MultiGage and the computer will automatically activate if the USB connection was removed. Conversely, it is also automatically disconnected when the USB cable is reconnected.



Connect the WiFi Antenna (c) to the WiFi Connector (c) on the rear of the MultiGage Base.